

Martin Sprocket & Gear

MPC Synchronous Sprockets

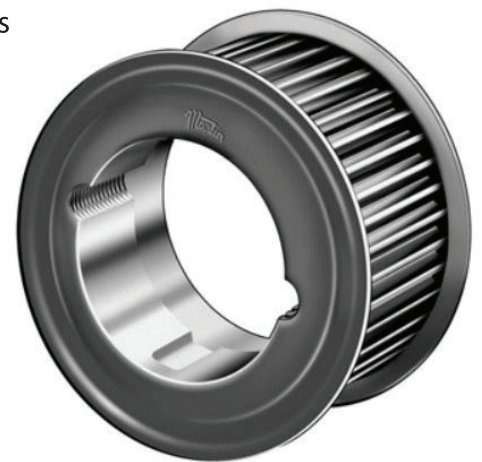


Direct Drop-In for Most Popular Tooth Profiles

MPC Sprockets are manufactured in various sizes, dimensions, and capacities to meet a variety of industrial requirements. These include a wide range of loads, speeds, and demanding applications such as blowers, conveyors, pumps, and mixers. They are compatible with most major belt manufacturers including: Optibelt Delta Chain, Carlisle Panther XT, Jason Platinum, Gates Poly Chain, and Conti Synchrochain Carbon.

Designed to run in today's higher horsepower applications, these Synchronous Sprockets provide a relatively quiet alternative to other low-gear, high-torque applications. In addition to less noise, MPC synchronous drives require less maintenance without the need to re-tension and lubricate the drive.

- Available in 8mm and 14mm pitches
- Belt widths: 12mm, 21mm, 36mm, 62mm (8mm pitch), 20mm, 37mm, 68mm, 90mm, 125mm (14mm pitch)
- Available in QD, TB, or other special adapters
- Special diameters, widths, and materials available
- Available in 22 teeth up to 224 teeth



ISC Companies, Inc.

12905 Highway 55 West

Minneapolis, MN 55441

763-559-0033 | isccompanies.com

Martin

