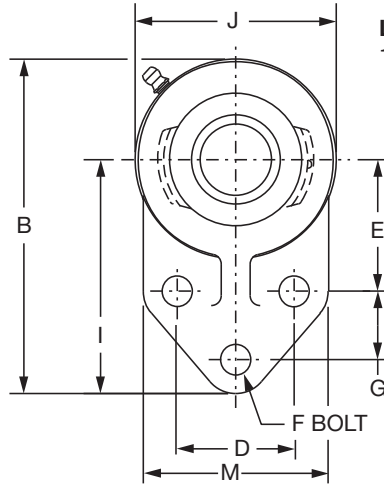
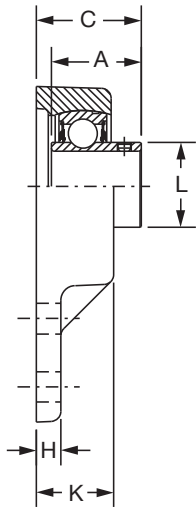
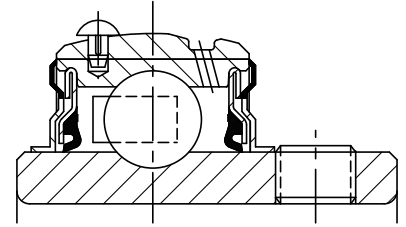




# SELECTION/DIMENSIONS

## Setscrew Ball Bearings SC FB NORMAL DUTY 3-BOLT FLANGED BRACKET BEARINGS



**Lube Fitting Thread Size:**  
1/8-27 NPT

Series	Shaft Size	Standard		No Lube/Sealed for Life (-NL)	
		Part No.	Description	Part No.	Description
204	1/2	<b>124435</b>	FB-SC-008	<b>068720</b>	FB-SC-008-NL
	5/8	<b>124436</b>	FB-SC-010	<b>059816</b>	FB-SC-010-NL
	3/4	<b>124437</b>	FB-SC-012	<b>058544</b>	FB-SC-012-NL
205	7/8	<b>124438</b>	FB-SC-014	<b>056765</b>	FB-SC-014-NL
	15/16	<b>124439</b>	FB-SC-015	@	FB-SC-015-NL
206	1	<b>124440</b>	FB-SC-100	<b>051774</b>	FB-SC-100-NL
	1-1/16	<b>124441</b>	FB-SC-101	@	FB-SC-101-NL
	1-1/8	<b>124442</b>	FB-SC-102	@	FB-SC-102-NL
	1-3/16	<b>124443</b>	FB-SC-103	<b>049615</b>	FB-SC-103-NL
207	1-1/4	<b>124444</b>	FB-SC-104S	<b>124450</b>	FB-SC-104S-NL
	1-1/4	<b>124445</b>	FB-SC-104	<b>058545</b>	FB-SC-104-NL
	1-5/16	<b>124446</b>	FB-SC-105	@	FB-SC-105-NL
	1-3/8	<b>124447</b>	FB-SC-106	@	FB-SC-106-NL
210	1-7/16	<b>124448</b>	FB-SC-107	<b>052016</b>	FB-SC-107-NL
	1-11/16	<b>052906</b>	FB-SCM-111	<b>068840</b>	FB-SCM-111-NL
	1-15/16	<b>052094</b>	FB-SC-115	<b>073669</b>	FB-SC-115-NL
	2	<b>058529</b>	FB-SC-200	<b>073139</b>	FB-SC-200-NL

@ Assembled to order.

FEATURES/BENEFITS PAGE B4-3	HOW TO ORDER/NOMENCLATURE PAGE B4-5	SELECTION PAGE B4-6	ACCESSORIES PAGE B4-98
--------------------------------	--	------------------------	---------------------------

# SELECTION/DIMENSIONS



## Setscrew Ball Bearings SC FB NORMAL DUTY 3-BOLT FLANGED BRACKET BEARINGS

Bearing Reference Guide

ULTRA KLEEN

E-Z KLEEN

Extreme Duty

Setscrew Ball Bearing

GRIP TIGHT

D-LOK Ball Bearing

Series	Shaft Size	Weight lbs. kgs.	A	B	C	D	E	F Bolt Dia.	G	H	I	J	K	L	M
204	1/2	1.51	1.23	4.25	1.34	1.50	1.69	3/8	0.88	0.31	3.00	2.50	0.98	1.12	2.38
	5/8	1.48													
	3/4	1.45	31.2	108.0	34.0	38.1	42.9	M10	22.4	7.9	76.2	63.5	24.9	28.4	60.5
205	7/8	1.81	1.34	4.75	1.51	1.63	1.81	3/8	1.13	0.38	3.38	2.75	1.11	1.32	2.50
	15/16	1.78													
	1	1.75	34.0	120.7	38.4	41.4	46.0	M10	28.7	9.7	85.9	69.9	28.2	33.5	63.5
206	1-1/16	2.12	1.52	5.38	1.65	1.88	2.06	3/8	1.25	0.38	3.75	3.25	1.13	1.57	2.75
	1-1/8	2.08													
	1-3/16	2.05													
	1-1/4	2.02	38.6	136.7	41.9	47.8	52.3	M10	31.8	9.7	95.3	82.6	28.7	39.9	69.9
207	1-1/4	3.46	1.71	6.13	1.88	2.00	2.37	1/2	1.25	0.50	4.25	3.75	1.31	1.84	3.25
	1-5/16	3.41													
	1-3/8	3.36													
	1-7/16	3.30	43.4	155.7	47.8	50.8	60.2	M12	31.8	12.7	108.0	95.3	33.3	46.7	82.6
210	1-11/16	5.70	1.94	7.50	2.06	2.75	2.94	1/2	1.63	0.50	5.19	4.63	1.50	2.43	4.00
	1-15/16	5.50													
	2	5.40	49.3	190.5	52.3	69.9	74.7	M12	41.4	12.7	131.8	117.6	38.1	61.7	101.6

FEATURES/BENEFITS PAGE B4-3	HOW TO ORDER/NOMENCLATURE PAGE B4-5	SELECTION PAGE B4-6	ACCESSORIES PAGE B4-98
--------------------------------	--	------------------------	---------------------------