

# No. 35

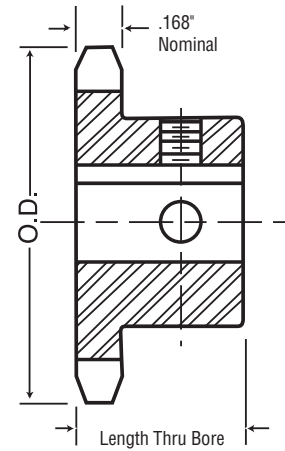
## 3/8" Pitch

# All Steel Stock Sprockets



### Single - Type BS — 2 Setscrews — Bored-To-Size

No. Teeth	Catalog Number	Outside Diameter	Length Thru Bore	Weight Lbs. (Approx.)	Stock Finished Bores Includes Keyway and 2 Setscrews
9	35BS9	1.260	3/4	0.10	*3/8
10	35BS10	1.380	3/4	0.11	*3/8 — *1/2 — † 3/8
11	35BS11	1.500	3/4	0.15	*3/8 — *1/2 — † 3/8 — † 3/4
12	35BS12	1.630	3/4	0.18	— *1/2 — 3/8 — † 3/4
13	35BS13	1.750	3/4	0.20	— *1/2 — 3/8 — 3/4
14	35BS14	1.870	3/4	0.22	— *1/2 — 3/8 — 3/4
15	35BS15	1.990	3/4	0.24	— *1/2 — 3/8 — 3/4 — 7/8 — 1
16	35BS16	2.110	3/4	0.29	— *1/2 — 3/8 — 3/4 — 7/8 — 1
17	35BS17	2.230	3/4	0.36	— *1/2 — 3/8 — 3/4 — 7/8 — 1
18	35BS18	2.350	3/4	0.39	— *1/2 — 3/8 — 3/4 — 7/8 — 1
19	35BS19	2.470	3/4	0.44	— *1/2 — 3/8 — 3/4 — 1
20	35BS20	2.590	3/4	0.51	— *1/2 — 3/8 — 3/4 — 1
21	35BS21	2.710	7/8	0.75	— *1/2 — 3/8 — 3/4 — 1
22	35BS22	2.830	7/8	0.78	— *1/2 — 3/8 — 3/4 — 1
23	35BS23	2.950	7/8	0.78	— *1/2 — 3/8 — 3/4 — 1
24	35BS24	3.070	7/8	0.79	— *1/2 — 3/8 — 3/4 — 1
25	35BS25	3.190	7/8	0.80	— *1/2 — 3/8 — 3/4 — 1
26	35BS26	3.310	7/8	0.84	— 3/8 — 3/4 — 7/8 — 1 — 1 1/8 — 1 3/8 — 1 1/2
27	35BS27	3.430	7/8	0.88	— 3/8 — 3/4 — 7/8 — 1 — 1 1/8 — 1 3/8 — 1 1/2
28	35BS28	3.550	7/8	0.86	— 3/8 — 3/4 — 7/8 — 1 — 1 1/8 — 1 3/8 — 1 1/2
30	35BS30	3.790	7/8	0.96	— 3/8 — 3/4 — 7/8 — 1 — 1 1/8 — 1 3/8 — 1 1/2
32	35BS32	4.030	7/8	1.14	— 3/8 — 3/4 — 7/8 — 1 — 1 1/8 — 1 3/8 — 1 1/2
35	35BS35	4.390	7/8	1.38	— 3/8 — 3/4 — 7/8 — 1 — 1 1/8 — 1 3/8 — 1 1/2
36	35BS36	4.510	7/8	1.41	— 3/8 — 3/4 — 7/8 — 1 — 1 1/8 — 1 3/8 — 1 1/2
40	35BS40	4.990	1	1.56	— 3/8 — 3/4 — 7/8 — 1 — 1 1/8 — 1 3/8 — 1 1/2
42	35BS42	5.230	1	1.64	— 3/8 — 3/4 — 7/8 — 1 — 1 1/8 — 1 3/8 — 1 1/2
45	35BS45	5.590	1	1.74	— 3/8 — 3/4 — 7/8 — 1 — 1 1/8 — 1 3/8 — 1 1/2
48	35BS48	5.950	1	1.86	— 3/8 — 3/4 — 7/8 — 1 — 1 1/8 — 1 3/8 — 1 1/2
54	35BS54	6.660	1	1.98	— 3/8 — 3/4 — 7/8 — 1 — 1 1/8 — 1 3/8 — 1 1/2
60	35BS60	7.380	1	2.34	— 3/8 — 7/8 — 1 — 1 1/8 — 1 3/8 — 1 1/2
70	35BS70	8.580	1	3.14	— 3/8 — 7/8 — 1 — 1 1/8 — 1 3/8 — 1 1/2
72	35BS72	8.810	1	3.30	— 3/8 — 7/8 — 1 — 1 1/8 — 1 3/8 — 1 1/2
80	35BS80	9.770	1	3.94	— 3/8 — 7/8 — 1 — 1 1/8 — 1 3/8 — 1 1/2
84	35BS84	10.250	1	4.26	— 3/8 — 7/8 — 1 — 1 1/8 — 1 3/8 — 1 1/2
96	35BS96	11.680	1	5.22	— 3/8 — 7/8 — 1 — 1 1/8 — 1 3/8 — 1 1/2
112	35BS112	13.590	1	6.50	— 3/8 — 7/8 — 1 — 1 1/8 — 1 3/8 — 1 1/2



**TYPE BS**



**BORED-TO-SIZE**

\* Indicates no keyway. (2) 1/4" setscrews only in 1/2" & 3/8" bore.

† Keyway with Setscrew at 90°.

Hub diameters vary to suit different bore sizes.

NOTE: KEYWAY IS ON CENTER LINE OF TOOTH.