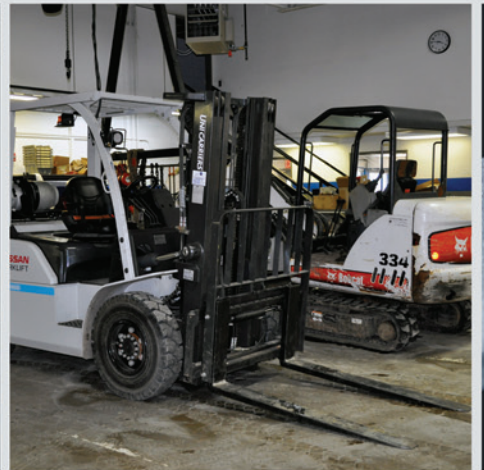


# Adams-ISC

Industrial Distributor ✦

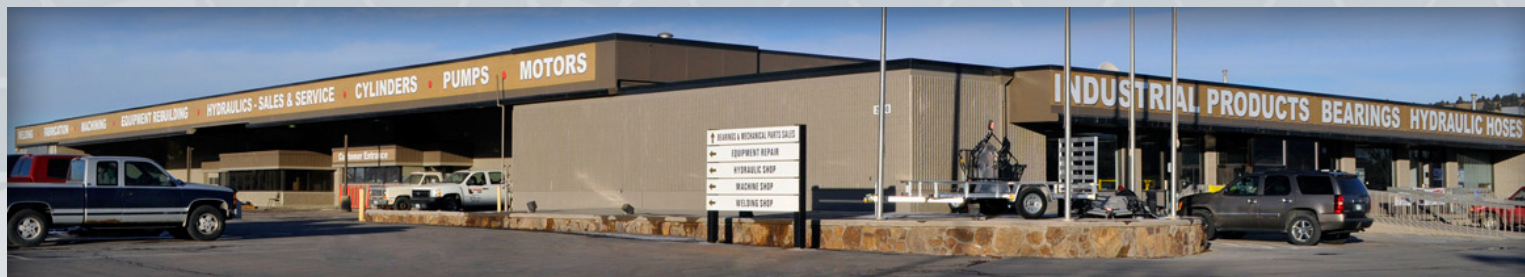


## LEADING THE WAY IN...

- + Bearings & Power Transmission Distribution
- + Machining, Welding & Custom Fabrication
- + Industrial & Hydraulic Equipment Repair







## Who is Adams-ISC?

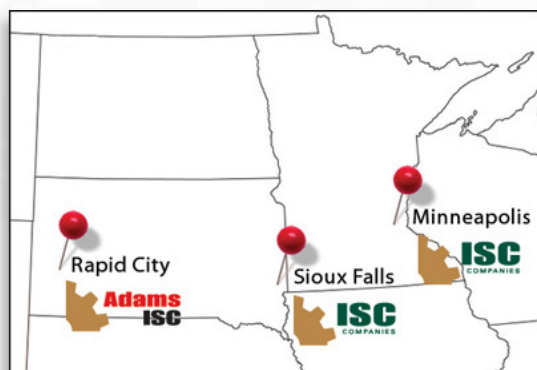
Adams-ISC was formed in 2011 as a merger between Adams Machining & Welding in Rapid City and ISC Companies, an industrial parts distributor headquartered in Minneapolis. Both companies share a strong history of delivering customer-driven solutions in the industrial marketplace.

Adams Machining & Welding opened in 1982 with the vision of providing the best possible service to companies needing custom machining. ISC Companies—formerly known as Industrial Supply Company—was incorporated in 1939 with the determination to “Become the foremost distributor of power transmission equipment and factory supplies in the entire Midwest”.

Together, we form Adams-ISC, committed to being the region’s premier partner in delivering customer-specific solutions and fast customer service. »

## Adams-ISC Geography Served

- South Dakota
- Eastern Montana
- Western Nebraska
- Wyoming



## Partner With Us

At Adams-ISC, we have the parts and service experience to help you keep your equipment running safely and efficiently. Our technicians are trained in mechanical and hydraulic systems and are always ready to respond to emergency break downs, planned maintenance, and machine upgrades at our shop or at your job site.

We can design, build, and implement complex solutions to real-world problems. Our machinists, technicians, and welders provide rapid, reliable, and quality workmanship from concept to completion and because we offer so many services under one roof, we specialize in large, multi-step projects that many shops aren’t equipped for. We offer very competitive pricing and fast turnaround times. »



## Markets Served

- Aggregate
- Food/Beverage
- Mining
- Agriculture
- Forestry
- Municipalities
- Architectural
- Gas/Oil
- Power Generation
- Chemical
- Hospitality
- Pulp/Paper
- Commercial
- Industrial
- Railroad
- Construction
- Manufacturing
- Transportation
- Contractors
- Marine
- Utilities
- Energy
- Military
- Wastewater



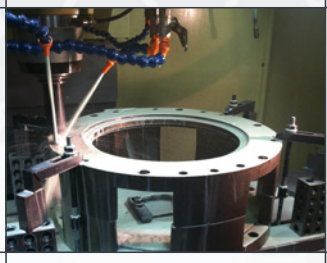
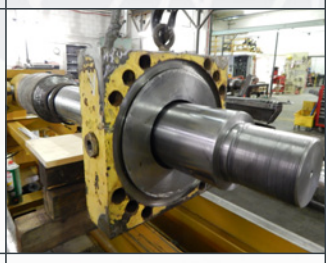
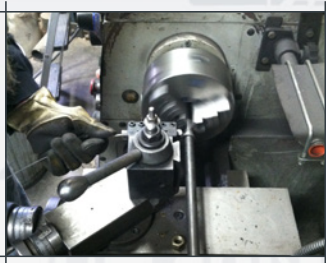


## Machine & Welding Shop

While many machine shops look for production jobs, Adams-ISC is a job shop that focuses on machining specialty parts in small quantities for repair, replacement, or prototype purposes. Our experienced machinists are experts in determining what machines, which processes, and what materials will be most efficient to make your parts.

Job shop service has two main benefits—short lead times and precision work. From simple milled or turned parts to custom multi-operation machines, our goal is to help solve your toughest problems.

When your equipment breaks down and you need emergency service, contact the Adams-ISC Services team. We are here to help you get back to business, however is most convenient for you. »



## Job Shop Services

- One-off Manufacturing
- Precision Machining
- CNC Turning/Milling
- Parts Sourcing
- Repair of Worn Parts
- Replacement of Obsolete Parts
- Heavy Equipment Welding
- Horizontal Machining
- Surface Grinding
- Prototypes/Design
- Cylinder Machining
- Hard-Facing
- Heat-Treating
- Jig/Line Boring
- Laser Cutting

## Welding

- AWS Certified D1.1: Structural Welding Code/Steel
- TIG/MIG/ /Stick
- Certified In-Shop & Portable

## Metalwork

- Brazing
- Cutting
- Grinding
- Forming
- Sawing
- Drilling
- Boring
- Punching
- Counterboring
- Countersinking
- Tapping
- Deburring



HYDRAULICS  
EQUIPMENT  
REPAIR  
BEARINGS &  
INDUSTRIAL  
PARTS  
MACHINING  
& WELDING  
605-342-3275



# ADAMS-ISC SERVICES

## HYDRAULIC REPAIR, REBUILD & TESTING



## HYDRAULIC CYLINDER SERVICE & REPAIR



## HYDRAULIC HOSE ASSEMBLY & REPAIR



## LINE BORING SERVICE IN-SHOP & IN-FIELD



## INDUSTRIAL EQUIPMENT TRUCK/TRAILER REPAIR



## CERTIFIED CRANE INSPECTION & REPAIR



## The Repair Shop

In our repair shop or at your work-site with our fleet of field service trucks, Adams-ISC has the equipment and experience to keep your equipment running at peak performance. We specialize in industrial and hydraulic equipment repair and rebuild—plus we'll take on those one-off projects that other shops won't touch.

## Industrial & Hydraulic Equipment Repair

- Articulated Trucks
- Asphalt Equipment
- Attachments
- Backhoes
- Balers
- Bucket Trucks
- Bulldozers
- Combines
- Compactors
- Concrete Equipment
- Cranes
- Crushers
- Dump Trucks
- Excavators
- Forklifts
- Hydro Swings
- Loaders
- Logging Trucks
- Log Splitters
- Motor Graders
- Pavers
- Planers
- Scrapers
- Skid Steers
- Tractors
- Trucks/Trailers
- Semis
- Snow Plows
- Wheel Loaders
- Windrowers & More...





**Adams-ISC**  
2090 Deadwood Ave  
Rapid City, SD 57702  
605-343-9393



**ISC Companies**  
12905 Highway 55  
Minneapolis, MN 55441  
763-559-0033

**ISC Companies**  
1100 W Russell St  
Sioux Falls, SD 57104  
605-336-3471