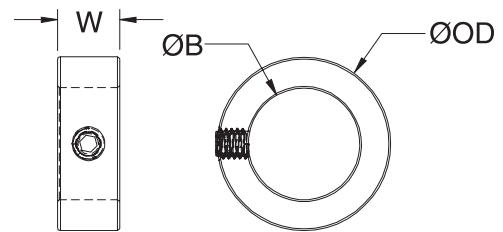


SET SCREW COLLAR

INCH AND METRIC DIMENSION SERIES

SC
MSC

PART NUMBER				SPECIFICATIONS			
BLACK OXIDE STEEL	ALUMINUM	STAINLESS STEEL	PLASTIC	BORE B (in)	OUTER DIAM. OD (in)	WIDTH W (in)	FORGED SET SCREW
SC-3-F	SC-3-A	SC-3-SS	SC-3-P	0.1875	7/16	0.250	#8-32x1/8
SC-4-F	SC-4-A	SC-4-SS	SC-4-P	0.2500	1/2	0.281	#8-32x1/8
SC-5-F	SC-5-A	SC-5-SS	SC-5-P	0.3125	5/8	0.344	#10-32x5/32
SC-6-F	SC-6-A	SC-6-SS	SC-6-P	0.3750	3/4	0.375	1/4-20x3/16
SC-7-F	SC-7-A	SC-7-SS	SC-7-P	0.4375	7/8	0.438	1/4-20x1/4
SC-8-F	SC-8-A	SC-8-SS	SC-8-P	0.5000	1	0.438	1/4-20x1/4
SC-9-F	SC-9-A	SC-9-SS	SC-9-P	0.5625	1	0.438	1/4-20x1/4
SC-10-F	SC-10-A	SC-10-SS	SC-10-P	0.6250	1-1/8	0.500	5/16-18x1/4
SC-11-F	SC-11-A	SC-11-SS	SC-11-P	0.6875	1-1/4	0.563	5/16-18x1/4
SC-12-F	SC-12-A	SC-12-SS	SC-12-P	0.7500	1-1/4	0.563	5/16-18x1/4
SC-13-F		SC-13-SS		0.8125	1-5/16	0.563	5/16-18x1/4
SC-14-F		SC-14-SS		0.8750	1-1/2	0.563	5/16-18x5/16
SC-15-F		SC-15-SS		0.9375	1-5/8	0.563	5/16-18x5/16
SC-16-F		SC-16-SS		1.0000	1-5/8	0.625	5/16-18x5/16
SC-17-F		SC-17-SS		1.0625	1-3/4	0.625	5/16-18x5/16
SC-18-F		SC-18-SS		1.1250	1-3/4	0.625	5/16-18x5/16
SC-19-F		SC-19-SS		1.1875	2	0.688	3/8-16x3/8
SC-20-F		SC-20-SS		1.2500	2	0.688	3/8-16x3/8
SC-21-F		SC-21-SS		1.3125	2-1/8	0.688	3/8-16x3/8
SC-22-F		SC-22-SS		1.3750	2-1/8	0.750	3/8-16x3/8
SC-23-F		SC-23-SS		1.4375	2-1/4	0.750	3/8-16x3/8
SC-24-F		SC-24-SS		1.5000	2-1/4	0.750	3/8-16x3/8
SC-26-F		SC-26-SS		1.6250	2-1/2	0.813	3/8-16x3/8
SC-28-F		SC-28-SS		1.7500	2-3/4	0.875	1/2-13x1/2
SC-31-F		SC-31-SS		1.9375	3	0.875	1/2-13x1/2
SC-32-F		SC-32-SS		2.0000	3	0.875	1/2-13x1/2
SC-33-F		SC-33-SS		2.0625	3	0.875	1/2-13x1/2
SC-34-F		SC-34-SS		2.1250	3	0.875	1/2-13x1/2
SC-36-F		SC-36-SS		2.2500	3-1/4	0.938	1/2-13x1/2
SC-38-F		SC-38-SS		2.3750	3-1/4	0.938	1/2-13x1/2
SC-39-F		SC-39-SS		2.4375	3-1/2	1.000	1/2-13x1/2
SC-40-F		SC-40-SS		2.5000	3-1/2	1.000	1/2-13x1/2
SC-44-F		SC-44-SS		2.7500	4	1.125	1/2-13x5/8
SC-47-F		SC-47-SS		2.9375	4-1/4	1.125	1/2-13x5/8
SC-48-F		SC-48-SS		3.0000	4-1/4	1.125	1/2-13x5/8
SC-55-F				3.4375	4-3/4	1.125	1/2-13x5/8
SC-56-F				3.5000	4-3/4	1.125	1/2-13x5/8
SC-63-F				3.9375	5-1/4	1.125	1/2-13x5/8
SC-64-F				4.0000	5-1/4	1.125	1/2-13x5/8
BLACK OXIDE STEEL		STAINLESS STEEL		BORE B (mm)	OUTER DIAM. OD (mm)	WIDTH W (mm)	FORGED SET SCREW
MSC-4-F		MSC-4-SS		4	8	5	M2.5x3
MSC-5-F		MSC-5-SS		5	10	6	M3x4
MSC-6-F		MSC-6-SS		6	12	8	M4x4
MSC-8-F		MSC-8-SS		8	16	8	M4x4
MSC-10-F		MSC-10-SS		10	20	10	M5x5
MSC-12-F		MSC-12-SS		12	22	12	M6x6
MSC-14-F		MSC-14-SS		14	25	12	M6x6
MSC-15-F		MSC-15-SS		15	25	12	M6x6
MSC-16-F		MSC-16-SS		16	28	12	M6x8
MSC-18-F		MSC-18-SS		18	32	14	M6x8
MSC-20-F		MSC-20-SS		20	32	14	M6x8
MSC-22-F		MSC-22-SS		22	36	14	M6x8
MSC-25-F		MSC-25-SS		25	40	16	M8x8
MSC-28-F		MSC-28-SS		28	45	16	M8x10
MSC-30-F		MSC-30-SS		30	45	16	M8x8
MSC-32-F		MSC-32-SS		32	50	16	M8x10
MSC-35-F		MSC-35-SS		35	56	16	M8x12
MSC-38-F		MSC-38-SS		38	56	16	M8x10
MSC-40-F		MSC-40-SS		40	63	18	M10x12
MSC-45-F		MSC-45-SS		45	70	18	M10x12
MSC-50-F		MSC-50-SS		50	80	18	M10x16



- Forged socket set screws.
- Additional sizes available.

INCH SIZES:

- Bore tolerances for SC styles:
- | BORE | TOLERANCE |
|---------------|---------------------|
| Up to 1" | +0.0005" to +0.002" |
| 1-1/16" to 3" | +0.0005" to +0.003" |
| 3-1/16" to 4" | +0.0010" to +0.004" |

- Width tolerance: +0.003" -0.010"

METRIC SIZES:

- Bore tolerance: +0.050 mm +0.012 mm
- Width tolerance: +0.076 mm -0.254 mm

For engineering and warranty/disclaimer information, see pp. 3 and 19 or www.ruland.com