



FEATURES/BENEFITS

TAPER-LOCK Bushings



- Clean, Compact Design
- An Industry Standard for over 40 years
- Easy-on, Easy-off
- 8° Taper-Grips Tight, Holds Tight, Runs True, No Wobble
- Total System Concept: Bushings, Hubs, Adapters and Products
- World-Wide Acceptance and Availability
- Flush Mounting-No Protruding Parts
- Diamond **D**® Integral Key for Added Value and Convenience

DODGE TAPER-LOCK BUSHING WITH INTEGRAL KEY

- Popular bore sizes, 1008 thru 2517
- Capitalizes on proven DODGE sintered steel technology
- Convenience: No more fumbling with a separate key and setscrew over the key. Integral key cannot work loose or fall out.
- More Secure fit: Clearances between key and bushing are automatically eliminated, providing a more precise fit. Provides full key even in maximum bore sizes. . . No more "shallow keyseat" compromise.
- Cost Reduction: Eliminates labor cost associated with installing key and separate key, and associated inventory expense.
- Engineered and Tested Design: Integral key concept thoroughly analyzed, including computerized Finite Element Analysis (FEA), for stress evaluation. Extensive laboratory testing included static and dynamic loading on customized machinery. Results demonstrated in successful field applications.

TAPER-LOCK Integral Key Bushing

Simple Mounting



Easy On

- Insert bushing into sprocket
- Match holes (not threads).
- Put screws into holes that are farthest apart
- Slip entire unit onto shaft
- Set drive alignment and tighten screws



Easy Off

- Take both screws out entirely
- Insert one screw into hole that is threaded in the bushing only
- Use as jackscrew to disengage bushing

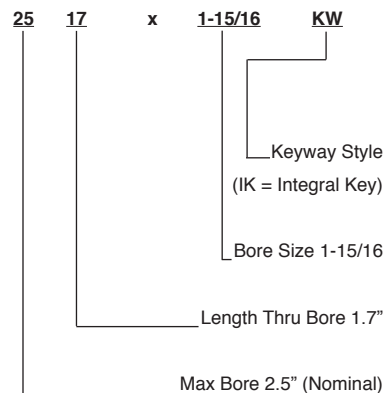


IMPORTANT!

Do not use lubricants or anti-seize compounds on tapered bore, bushing suitcase, shaft or screws. Complete installation instructions are available on www.dodge-pt.com.

Example Nomenclature

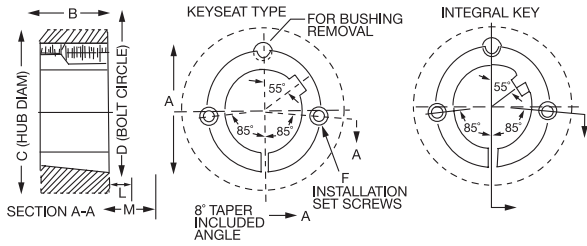
TAPER-LOCK Bushing





SPECIFICATION

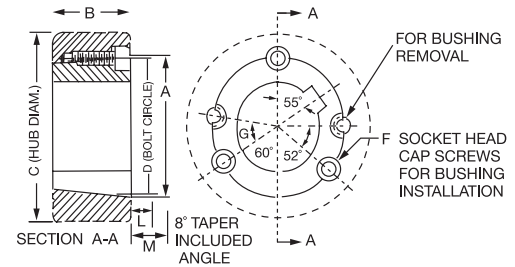
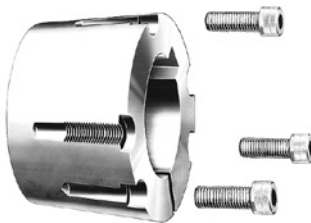
TAPER-LOCK Bushings - Dimensions



Dimensions For 1008 Thru 3030 TAPER-LOCK Bushings

Bush No.	Ratings (LB-IN)		A	B	C Hub Dia ■			D	F †		L ●		M ★	
	Torque Capacity ◆	Wrench Torque Install Screws			CL 30	Steel	Qty		Size	Std Hex Key	Short Key ▲	Std. Hex Key	Short Key ▲	
1008	1200	55	1.39	0.87	2.19	1.94	1.33	2	1/4 X 1/2	1.13	0.63	1.25	0.75	
1108	1300	55	1.51	0.87	2.31	2.06	1.45	2	1/4 X 1/2	1.13	0.63	1.25	0.75	
1210	3600	175	1.87	1.00	3.25	2.88	1.75	2	3/8 X 5/8	1.38	0.81	1.63	1.10	
1215	3550	175	1.87	1.50	2.88	2.63	1.75	2	3/8 X 5/8	1.38	0.81	1.63	1.10	
1310	3850	175	2.00	1.00	3.38	3.00	1.88	2	3/8 X 5/8	1.38	0.81	1.63	1.10	
1610	4300	175	2.25	1.00	3.63	3.25	2.13	2	3/8 X 5/8	1.38	0.81	1.63	1.10	
1615	4300	175	2.25	1.50	3.25	3.00	2.13	2	3/8 X 5/8	1.38	0.81	1.63	1.10	
2012	7150	280	2.75	1.25	4.38	3.88	2.63	2	7/16 X 7/8	1.56	0.94	2.00	1.38	
2517	11600	430	3.38	1.75	4.88	4.38	3.25	2	1/2 X 1	1.63	1.00	2.25	1.63	
2525	11300	430	3.38	2.50	4.50	4.25	3.25	2	1/2 X 1	1.63	1.00	2.25	1.63	
3020	24000	800	4.25	2.00	6.25	5.63	4.00	2	5/8 X 1-1/4	1.81	1.19	2.69	2.10	
3030	24000	800	4.25	3.00	5.75	5.38	4.00	2	5/8 X 1-1/4	1.81	1.19	2.69	2.10	

3535 thru 5050 Size



Dimensions For 3525 Thru 5050 TAPER-LOCK Bushings

Bush No.	Ratings (LB-IN)		A	B	C Hub Dia ■			D	F †		G	L ●		M ★	
	Torque Capacity ◆	Wrench Torque Install Screws			CL 30	Steel	Qty		Size	Std Hex Key		Short Key ▲	Std. Hex Key	Short Key ▲	
3525	44800	1000	5.00	2.50	7.00	6.50	4.83	3	1/2 X 1-1/2	39	2.00	1.31	3.38	2.69	
3535	44800	1000	5.00	3.50	7.00	6.50	4.83	3	1/2 X 1-1/2	39	2.00	1.31	3.38	2.69	
4030	77300	1700	5.75	3.00	8.50	7.75	5.54	3	5/8 X 1-3/4	39	2.39	1.63	4.13	3.38	
4040	77300	1700	5.75	4.00	8.50	7.75	5.54	3	5/8 X 1-3/4	40	2.39	1.63	4.13	3.38	
4535	110000	2450	6.38	3.50	9.50	8.75	6.13	3	3/4 X 2	40	2.63	1.94	4.75	4.10	
4545	110000	2450	6.38	4.50	9.50	8.75	6.13	3	3/4 X 2	40	2.63	1.94	4.75	4.10	
5040	126000	3100	7.00	4.00	10.50	9.50	6.72	3	7/8 X 2-1/4	37	2.81	2.31	5.25	4.81	
5050	126000	3100	7.00	5.00	10.50	9.50	6.72	3	7/8 X 2-1/4	37	2.81	2.31	5.25	4.81	

Note: For dimensions required for machining hubs, consult factory.

■ Hub diameter required depends on the application.
Hub diameter shown is based on 30,000 P.S.I. minimum ultimate tensile strength.

◆ Important: refer to service factor information on page PT6-4.

● Space required to tighten bushing. Also space required to loosen screws to permit removal of hub by puller.

★ Space required to remove bushing using jackscrews-no puller required

▲ Standard hex key cut to minimum usable length.

† Use in position shown in drawing above for tightening bushing on shaft. When loosening bushing remove screws and use all except one in the holes. other

Note: Installation and maintenance instructions for Dodge products available at www.dodge-pt.com

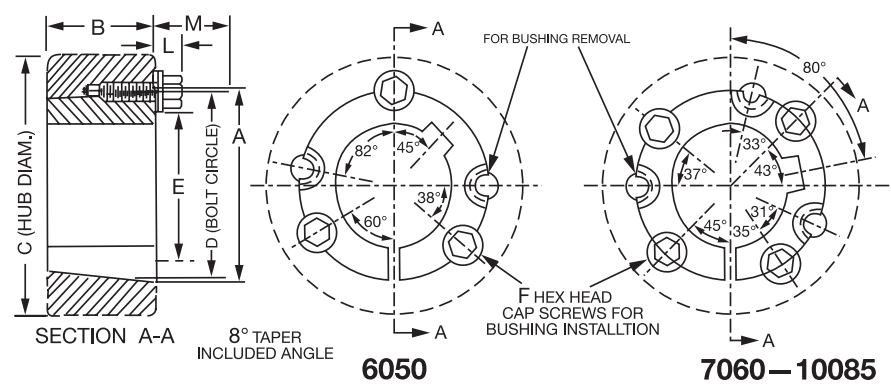
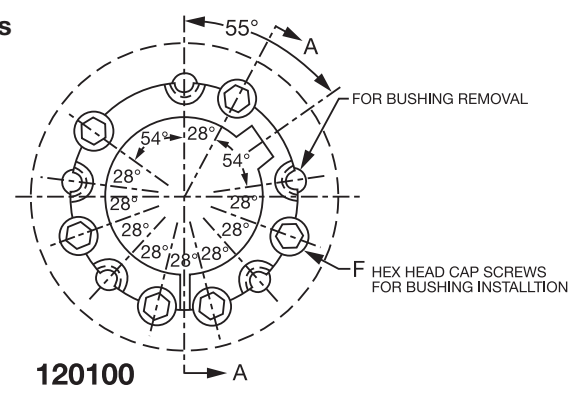
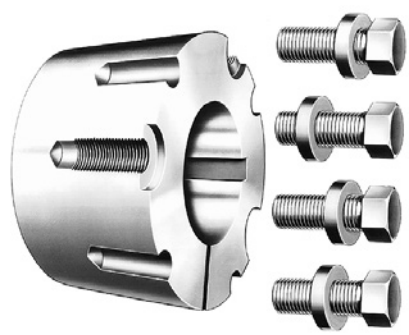
T-L FEATURES/BENEFITS PAGE PT6-2	T-L SPECIFICATION PAGE PT6-3	QD BUSHINGS PAGE PT6-16	GT BUSHINGS PAGE PT6-28
-------------------------------------	---------------------------------	----------------------------	----------------------------



SPECIFICATION

TAPER-LOCK Bushings - Dimensions

6050 thru 120100 Sizes



Dimensions For 6050 Thru 120100 TAPER-LOCK Bushings

Bush No.	Ratings (LB-IN)		A	B	C Hub Dia		D	E	F		L	M
	Torque Capacity	Wrench Torque Install Screws			CL 30	Steel			Qty	Size		
6050	282000	7820	9.25	5.00	15.50	13.50	9.00	6.75	3	1-1/4 X 3-1/2	1.63	4.38
7060	416000	7820	10.25	6.00	17.00	14.80	10.00	7.75	4	1-1/4 X 3-1/2	1.63	4.38
8065	456000	7820	11.25	6.50	17.50	15.50	11.00	8.75	4	1-1/4 X 3-1/2	1.63	4.38
10085	869000	13700	14.75	8.50	22.00	19.50	14.50	11.75	4	1-1/2 X 4-1/4	2.00	5.38
120100	1520000	13700	17.25	10.00	26.00	23.00	17.00	14.25	6	1-1/2 X 4-1/4	2.00	5.38

Note: For dimensions required for machining hubs, consult factory.

- Hub diameter required depends on the application. Hub diameter shown is based on 30,000 P.S.I. minimum ultimate tensile strength.
- † Use in position shown in drawing above for tightening bushing on shaft. When loosening bushing remove screws and use all except one in the other holes.
- Space required to tighten bushing. Also space required to loosen screws to permit removal of hub by puller.
- ★ Space required to loosen bushing using screws as jackscrews - no puller required.
- ◆ Peak torque loads must not exceed torque capacity rating shown. Capacity values shown are for light starting and steady running conditions. For more severe duty, divide torque capacity by service factor suggested in following table.

Service Factor	Type of Loading
1.00	Light Starting & Steady Running
1.50	Light Starting & Uneven Running
2.00	Fairly Heavy Starting & Steady Or Uneven Running
2.50	Light or Heavy Starting & Moderate Shock Running
3.00	Light or Heavy Starting & Severe Shock Running, or Reversing Loads



SPECIFICATION

TAPER-LOCK Bushings - Stock Bore

TL Bush Size	Bore	P/N Integral Key	P/N Keyway	WT.	Bushing Keyway	Shaft Keyway REF	Key Size REF
1008	1/2"		119176	0.3	1/8 x 1/16	1/8 x 1/16	1/8 x 1/8
	9/16"		119177	0.3			
	5/8"	119180	117073	0.3	3/16 x 3/32	3/16 x 3/32	3/16 x 3/16
	11/16"		119179	0.2			
	3/4"		117150	0.2			
	13/16"		119181	0.2			
	7/8"	119182	117074	0.2			
	15/16" #	119184	119183	0.2	1/4 x 1/16	1/4 x 1/8	1/4 x 3/16 Δ
	1" #		117151	0.2			
	14MM		119565	0.3	5 x 2.3MM	5 x 5.3MM	5 x 5MM
	16MM		119566	0.3			
	18MM		119575	0.3	6 x 2.8MM	6 x 3.5MM	6 x 6MM
	19MM		119569	0.3			
	20MM		119576	0.3			
22MM		119577	0.2				
24MM		119567	0.2	8 x 1.3MM	8 x 4MM	8 X 7MM	
25MM		119568	0.2				
1108	1/2"		119365	0.3	1/8 x 1/4	1/8 x 1/4	1/8 x 1/8
	9/16"		119366	0.3			
	5/8"	119367	117075	0.3	3/16 x 3/32	3/16 x 3/32	3/16 x 3/16
	11/16"		119368	0.2			
	3/4"		117152	0.2			
	13/16"		119370	0.2			
	7/8"	119371	117076	0.2			
	15/16"		119372	0.2	1/4 x 1/8	1/4 x 1/8	1/4 x 1/4
	1"		117153	0.2			
	1-1/16" #		119374	0.2	1/4 x 1/16	1/4 x 1/8	1/4 x 3/16 Δ
	1-1/8" #		117077	0.1			
	14MM		119651	0.3	5 x 2.3MM	5 x 5.3MM	5 x 5MM
	16MM		119652	0.3			
	18MM		119653	0.3	6 x 2.8MM	6 x 3.5MM	6 x 6MM
19MM		119570	0.3				
20MM		119579	0.3				
22MM		119580	0.3				
24MM		119581	0.2	8 X 3.3MM	8 X 4MM	8 X 7MM	
25MM		119582	0.2				
1210	1/2"		119191	0.6	1/8 x 1/16	1/8 x 1/16	1/8 x 1/8
	9/16"		119192	0.6			
	5/8"	119195	117078	0.6	3/16 x 3/32	3/16 x 3/32	3/16 x 3/16
	11/16"		119194	0.5			
	3/4"		117154	0.5			
	13/16"		119196	0.5			
	7/8"	119197	117079	0.5			
	15/16"		119198	0.5	1/4 x 1/8	1/4 x 1/8	1/4 x 1/4
	1"	119201	117155	0.5			
	1-1/16"		119200	0.4			
	1-1/8"		117080	0.4			
	1-3/16"		117156	0.4			
	1-1/4"		117157	0.4			
	14MM		119583	0.6	5 x 2.3MM	5 x 5.3MM	5 x 5MM
16MM		119654	0.6				
18MM		119584	0.5	6 x 2.8MM	6 x 3.5MM	6 x 6MM	
19MM		119571	0.5				
20MM		119585	0.5				
22MM		119655	0.5				
24MM		119586	0.5	8 X 3.3MM	8 X 4MM	8 X 7MM	
25MM		119587	0.4				
28MM		119588	0.4				
30MM		119589	0.4				
32MM		119590	0.4	10 X 3.3MM	10 X 5MM	10 X 8MM	

Δ Key furnished for these sizes ONLY

+ These sizes are STEEL

Refer to torque capacity ratings on page PT6-3. If service factor of 2.0 or greater is required consult DODGE

TL Bush Size	Bore	P/N Integral Key	P/N Keyway	WT.	Bushing Keyway	Shaft Keyway REF	Key Size REF
1215	1/2"		119001	0.9	1/8 x 1/16	1/8 x 1/16	1/8 x 1/8
	9/16"		119002	0.9			
	5/8"		119003	0.8	3/16 x 3/32	3/16 x 3/32	3/16 x 3/16
	11/16"		119004	0.8			
	3/4"		119005	0.8			
	13/16"		119006	0.8			
	7/8"	119007	0.8				
	15/16"		119008	0.8	1/4 x 1/8	1/4 x 1/8	1/4 x 1/4
	1"		119009	0.7			
	1-1/16"		119010	0.6			
	1-1/8"		119011	0.6			
	1-3/16"		119012	0.5			
	1-1/4"		119013	0.5			
	1310	1/2"		119390	0.7	1/8 x 1/16	1/8 x 1/16
9/16"			119391	0.7			
5/8"			119392	0.7	3/16 x 3/32	3/16 x 3/32	3/16 x 3/16
11/16"			119393	0.7			
3/4"			119394	0.7			
13/16"			119395	0.7			
7/8"		119396	0.7				
15/16"			119397	0.6	1/4 x 1/8	1/4 x 1/8	1/4 x 1/4
1"			119398	0.6			
1-1/16"			119399	0.6			
1-1/8"			119400	0.6			
1-3/16"			119401	0.6			
1-1/4"			119402	0.6			
1-5/16" #			119403	0.6	5/16 x 5/32	5/16 x 5/32	5/16 x 5/16
1-3/8" #	119404		0.6				
1-7/16" +		119438	0.6	3/8 x 1/8	3/8 x 3/16	3/8 x 5/16 Δ	
14MM		119656	0.7	5 x 2.3MM	5 x 5.3MM	5 x 5MM	
16MM		119657	0.7				
18MM		119658	0.7	6 x 2.8MM	6 x 3.5MM	6 x 6MM	
19MM		119572	0.7				
20MM		119659	0.6				
22MM		119660	0.6				
24MM		119591	0.6	8 X 3.3MM	8 X 4MM	8 X 7MM	
25MM		119592	0.5				
28MM		119593	0.5	10 X 3.3MM	10 X 5MM	10 X 8MM	
30MM		119594	0.5				
32MM		119595	0.4				
35MM		119596	0.4				
1610	1/2"		119211	0.9	1/8 x 1/16	1/8 x 1/16	1/8 x 1/8
	9/16"		119212	0.9			
	5/8"	119213	117081	0.9	3/16 x 3/32	3/16 x 3/32	3/16 x 3/16
	11/16"		119214	0.9			
	3/4"		119215	0.9			
	13/16"		119216	0.9			
	7/8"	119217	117082	0.8			
	15/16"		117083	0.8	1/4 x 1/8	1/4 x 1/8	1/4 x 1/4
	1"	119219	117159	0.8			
	1-1/16"		119220	0.8			
	1-1/8"		119221	0.7			
	1-3/16"		119222	0.7			
	1-1/4"	119223	117161	0.7			
	1-5/16"		119224	0.6	5/16 x 5/32	5/16 x 5/32	5/16 x 5/16
1-3/8"	119225	117085	0.6				
1-7/16"	119226	117162	0.6	3/8 x 3/16	3/8 x 3/16	3/8 x 3/8	
1-1/2"	119227	117163	0.5				
1-9/16" #		119228	0.5	3/8 x 1/8	3/8 x 3/16	3/8 x 5/16 Δ	
1-5/8" #	119229	117086	0.5				
1-11/16" +		117071	0.5				
14MM		119661	0.9	5 x 2.3MM	5 x 5.3MM	5 x 5MM	
16MM		119662	0.9				

PT Component Quick References

Couplings

Clutches and Brakes

FLEXIDYNE

Fluid Couplings

TORQUE-TAMER

Bushings

T-L FEATURES/BENEFITS PAGE PT6-2	T-L SPECIFICATION PAGE PT6-3	QD BUSHINGS PAGE PT6-16	GT BUSHINGS PAGE PT6-28
-------------------------------------	---------------------------------	----------------------------	----------------------------

SPECIFICATION



TAPER-LOCK Bushings - Stock Bore

TL Bush Size	Bore	P/N Integral Key	P/N Keyway	WT.	Bushing Keyway	Shaft Keyway REF	Key Size REF			
1610 (cont)	18MM		119663	0.9	6 x 2.8MM	6 x 3.5MM	6 x 6MM			
	19MM		119573	0.8						
	20MM		119598	0.8						
	22MM		119236	0.8						
	24MM		119599	0.8	8 X 3.3MM	8 X 4MM	8 X 7MM			
	25MM		119600	0.7						
	28MM		119601	0.7						
	30MM		119602	0.7						
	32MM		119603	0.6	10 X 3.3MM	10 X 5MM	10 X 8MM			
	35MM		119604	0.6						
38MM		119605	0.5							
40MM		119606	0.5	12 X 3.3MM	12 X 5MM	12 X 8MM				
42MM +		393002	0.5							
1615	1/2"		119040	1.3	1/8 x 1/16	1/8 x 1/16	1/8 x 1/8			
	9/16"		119041	1.3						
	5/8"		119042	1.3	3/16 x 3/32	3/16 x 3/32	3/16 x 3/16			
	11/16"		119043	1.2						
	3/4"		119044	1.2						
	13/16"		119045	1.2						
	7/8"		119046	1.1						
	15/16"		119047	1.1	1/4 x 1/8	1/4 x 1/8	1/4 x 1/4			
	1"		119048	1.1						
	1-1/16"		119049	1						
	1-1/8"		119050	1						
	1-3/16"		119051	1						
	1-1/4"		119052	0.9	5/16 x 5/32	5/16 x 5/32	5/16 x 5/16			
	1-5/16"		119053	0.8						
	1-3/8"		119054	0.8						
	1-7/16"		119055	0.7						
	1-1/2"		119056	0.7						
	1-9/16" #		119057	0.7	3/8 x 3/16	3/8 x 3/16	3/8 x 3/8			
	1-5/8" #		119058	0.6						
	1-11/16" +		119068	0.6						
25MM		119039	0.7	8 X 3.3MM	8 X 4MM	8 X 7MM				
35MM		119038	0.7	10 X 3.3MM	10 X 5MM	10 X 8MM				
2012	1/2"		119241	1.7	1/8 x 1/16	1/8 x 1/16	1/8 x 1/8			
	9/16"		119242	1.7						
	5/8"		117087	1.7				3/16 x 3/32	3/16 x 3/32	3/16 x 3/16
	11/16"		119244	1.7						
	3/4"		117088	1.7						
	13/16"		119246	1.7						
	7/8"		117089	1.6	1/4 x 1/8	1/4 x 1/8	1/4 x 1/4			
	15/16"		119248	1.6						
	1"		117164	1.6						
	1-1/16"	119249	119250	1.6						
	1-1/8"		117090	1.5						
	1-3/16"	119252	117165	1.5	5/16 x 5/32	5/16 x 5/32	5/16 x 5/16			
	1-1/4"	119253	117166	1.4						
	1-5/16"		119254	1.3						
	1-3/8"		117091	1.2						
1-7/16"	119256	117167	1.2	3/8 x 3/16				3/8 x 3/16	3/8 x 3/8	
1-1/2"	119257	117168	1.2							
1-9/16"		119258	1.2							
1-5/8"		117092	1.2							
1-11/16"		117093	1.1							
1-3/4"		117094	1	1/2 x 1/4	1/2 x 1/4	1/2 x 1/2				
1-13/16"		119262	1							
1-7/8"		117095	0.9							

TL Bush Size	Bore	P/N Integral Key	P/N Keyway	WT.	Bushing Keyway	Shaft Keyway REF	Key Size REF
2012 (cont)	1-15/16" #		117169	0.9	1/2 x 3/16	1/2 x 1/4	1/2 x 7/16 Δ
	2" #		117170	0.9			
	2-1/8" +		117177	0.9			
	14MM		119664	1.7	5 x 2.3MM	5 x 5.3MM	5 x 5MM
	16MM		119665	1.7			
	18MM		119666	1.6	6 x 2.8MM	6 x 3.5MM	6 x 6MM
	19MM		119574	1.6			
	20MM		119607	1.6			
	22MM		119667	1.6			
	24MM		119608	1.5	8 X 3.3MM	8 X 4MM	8 X 7MM
25MM		119609	1.5				
28MM		119610	1.5				
30MM		119611	1.4				
32MM		119612	1.4				
35MM		119613	1.3	10 X 3.3MM	10 X 5MM	10 X 8MM	
38MM		119614	1.3				
40MM		119615	1.2				
42MM		119616	1.1	12 X 3.3MM	12 X 5MM	12 X 8MM	
45MM		119617	1				
48MM		119668	0.9	14 X 3.8MM	14 X 5.5MM	14 X 9MM	
2517	1/2"		119100	3.7	1/8 x 1/16	1/8 x 1/16	1/8 x 1/8
	5/8"		119102	3.6			
	11/16"		119103	3.5	3/16 x 3/32	3/16 x 3/32	3/16 x 3/16
	3/4"		119104	3.4			
	13/16"		119105	3.4			
	7/8"		119106	3.3			
	15/16"		119107	3.3			
	1"		119108	3.3	1/4 x 1/8	1/4 x 1/8	1/4 x 1/4
	1-1/16"		119109	3.2			
	1-1/8"		119110	3.2			
	1-3/16"		119111	3.2			
	1-1/4"		119112	3.2			
	1-5/16"		119113	3.1	5/16 x 5/32	5/16 x 5/32	5/16 x 5/16
	1-3/8"		119114	3.1			
	1-7/16"		119115	3	3/8 x 3/16	3/8 x 3/16	3/8 x 3/8
1-1/2"		119116	2.9				
1-9/16"		119117	2.9				
1-5/8"	119144	119118	2.8				
1-11/16"		119119	2.8				
1-3/4"		119120	2.7	1/2 x 1/4	1/2 x 1/4	1/2 x 1/2	
1-13/16"		119121	2.6				
1-7/8"		119122	2.5				
1-15/16"		117173	2.4				
2"		117174	2.3				
2-1/16"		119125	2.3	5/8 x 3/16	5/8 x 5/16	5/8 x 1/2 Δ	
2-1/8"		117096	2.2				
2-3/16"		117175	2.1				
2-1/4"		117097	2				
2-5/16"		119129	1.9				
2-3/8"		117098	1.9	8 X 3.3MM	8 X 4MM	8 X 7MM	
2-7/16" #		117176	1.8				
2-1/2" #		117099	1.8				
2-5/8" +		117111	1.8				
2-11/16" +		117115	1.8				
14MM		119669	3.6	5 x 2.3MM	5 x 5.3MM	5 x 5MM	
16MM		119670	3.6				
18MM		119671	3.5	6 x 2.8MM	6 x 3.5MM	6 x 6MM	
19MM		119672	3.4				
20MM		119618	3.4				
22MM		119619	3.3				
24MM		119620	3.3	8 X 3.3MM	8 X 4MM	8 X 7MM	
25MM		119621	3.2				
28MM		119622	3.1				
30MM		119623	3.1				

Δ Key furnished for these sizes ONLY
 + These sizes are STEEL
 # Refer to torque capacity ratings on page PT6-3. If service factor of 2.0 or greater is required consult DODGE



SPECIFICATION

TAPER-LOCK Bushings - Stock Bore

TL Bush Size	Bore	P/N Integral Key	P/N Keyway	WT.	Bushing Keyway	Shaft Keyway REF	Key Size REF
2517 (cont)	32MM		119624	3	10 X 3.3MM	10 X 5MM	10 X 8MM
	35MM		119625	2.9			
	38MM		119626	2.9			
	40MM		119627	2.8	12 X 3.3MM	12 X 5MM	12 X 8MM
	42MM		119628	2.6			
	45MM		119629	2.5	14 X 3.8MM	14 X 5.5MM	14 X 9MM
	48MM		119630	2.4			
	50MM		119640	2.3			
	55MM		119641	2	16 X 4.3MM	16 X 6MM	16 X 10MM
	60MM		119642	1.7	18 X 4.4MM	18 X 7MM	18 X 11MM
65MM		119643	1.4				

TL Bush Size	Bore	P/N Keyway	WT.	Bushing Keyway	Shaft Keyway REF	Key Size REF			
2525	3/4"	119304	4.9	3/16 x 3/32	3/16 x 3/32	3/16 x 3/16			
	7/8"	119306	4.8						
	15/16"	119307	4.8	1/4 x 1/8	1/4 x 1/8	1/4 x 1/4			
	1"	119308	4.8						
	1-1/8"	119310	4.6						
	1-3/16"	119311	4.5						
	1-1/4"	119312	4.4						
	1-3/8"	119314	4.2	5/16 x 5/32	5/16 x 5/32	5/16 x 5/16			
	1-7/16"	119315	4.2	3/8 x 3/16	3/8 x 3/16	3/8 x 3/8			
	1-1/2"	119316	4						
	1-5/8"	119318	3.8						
	1-11/16"	119319	3.8						
	1-3/4"	119320	3.7						
	1-13/16"	119321	3.2				1/2 x 1/4	1/2 x 1/4	1/2 x 1/2
	1-7/8"	119322	3.4						
	1-15/16"	119323	3.2						
	2"	119324	3.1						
	2-1/8"	119326	2.9						
	2-3/16"	119327	2.5						
	2-1/4"	119328	2.3	5/8 x 3/16	5/8 x 5/16	5/8 x 1/2 Δ			
	2-5/16"	119329	2						
	2-3/8"	119330	2						
	2-7/16"	119331	2						
	2-1/2"	119332	2						
	3020	7/8"	117103	6.5	3/16 x 3/32	3/16 x 3/32	3/16 x 3/16		
		15/16"	117101	6.5	1/4 x 1/8	1/4 x 1/8	1/4 x 1/4		
		1"	117102	6.5					
		1-1/8"	117104	6.4					
		1-3/16"	117105	6.4					
		1-1/4"	117106	6.3					
1-5/16"		117107	6.1	5/16 x 5/32	5/16 x 5/32	5/16 x 5/16			
1-3/8"		117108	6	3/8 x 3/16	3/8 x 3/16	3/8 x 3/8			
1-7/16"		117109	6						
1-1/2"		117110	5.9						
1-9/16"		117135	5.9						
1-5/8"		117112	5.9						
1-11/16"		117113	5.7						
1-3/4"		117114	5.6						
1-13/16"		117136	5.5				1/2 x 1/4	1/2 x 1/4	1/2 x 1/2
1-7/8"		117116	5.4						
1-15/16"		117117	5.3						
2"		117118	5.2						
2-1/16"		117119	5						
2-1/8"		117120	5						
2-3/16"		117121	4.9						
2-1/4"		117122	4.8						

TL Bush Size	Bore	P/N Keyway	WT.	Bushing Keyway	Shaft Keyway REF	Key Size REF			
3020 (cont)	2-5/16"	117137	4.6	5/8 x 5/16	5/8 x 5/16	5/8 x 5/8			
	2-3/8"	117124	4.5						
	2-7/16"	117125	4.4						
	2-1/2"	117126	4.3						
	2-5/8"	117128	4						
	2-11/16"	117129	3.9						
	2-3/4"	117130	3.7						
	2-13/16"	117139	3.7				3/4 x 1/4	3/4 x 3/8	3/4 x 5/8 Δ
	2-7/8"	117132	3.6						
	2-15/16" # 3" #	117133	3.6						
	3-1/8" +	117178	3.3						
	3-3/16" +	117179	3.3						
	3-1/4" +	117180	3.3						
	24MM	119673	6.5	8 X 3.3MM	8 X 4MM	8 X 7MM			
	25MM	119674	6.5						
	28MM	119675	6.4						
	30MM	119676	6.4						
	32MM	119677	6.3	10 X 3.3MM	10 X 5MM	10 X 8MM			
	35MM	119678	6						
	38MM	119679	5.9						
40MM	119680	5.9							
42MM	119681	5.8	12 X 3.3MM	12 X 5MM	12 X 8MM				
45MM	119682	5.6	14 X 3.8MM	14 X 5.5MM	14 X 9MM				
48MM	119644	5.5							
50MM	119645	5.2							
55MM	119646	5							
60MM	119647	4.9	18 X 4.4MM	18 X 7MM	18 X 11MM				
65MM	119648	4.3							
70MM	119649	3.7							
75MM	119650	3.5	20 X 4.9MM	20 X 7.5MM	20 X 12MM				
80MM +	117721	4	22 X 5.4MM	22 X 9MM	22 X 14MM				
3030	15/16"	117004	10	1/4 x 1/8	1/4 x 1/8	1/4 x 1/4			
	1"	117005	9.4						
	1-1/8"	117007	9.4						
	1-3/16"	117008	9.2						
	1-1/4"	117009	9						
	1-5/16"	117010	8.9	5/16 x 5/32	5/16 x 5/32	5/16 x 5/16			
	1-3/8"	117011	8.8						
	1-7/16"	117012	8.6						
	1-1/2"	117013	8.5						
	1-9/16"	117014	8.4						
	1-5/8"	117015	8.2	3/8 x 3/16	3/8 x 3/16	3/8 x 3/8			
	1-11/16"	117016	8						
	1-3/4"	117017	7.8						
	1-13/16"	117018	7.6						
	1-7/8"	117019	7.5						
	1-15/16"	117020	7.4	1/2 x 1/4	1/2 x 1/4	1/2 x 1/2			
	2"	117021	7.3						
	2-1/16"	117022	7.2						
	2-1/8"	117023	7.1						
	2-3/16"	117024	6.9						
	2-1/4"	117025	6.7	5/8 x 5/16	5/8 x 5/16	5/8 x 5/8			
	2-5/16"	117026	6.6						
	2-3/8"	117027	6.4						
	2-7/16"	117028	6.2						
2-1/2"	117029	6.1							
2-5/8"	117031	6							
2-11/16"	117032	5.9							
2-3/4"	117033	5.6							
2-7/8"	117035	5.3	3/4 x 1/8				3/4 x 3/8	3/4 x 1/2 Δ	
2-15/16" # 3" #	117036	5							
3-1/8" +	117181	4.7							
3-3/16" +	117182	4.7							
3-1/4" +	117183	4.7							
28MM	119808	9.4	8 X 3.3MM	8 X 4MM	8 X 7MM				
32MM	119809	9	10 X 3.3MM	10 X 5MM	10 X 8MM				
38MM	119810	8.4	14 X 3.8MM	14 X 5.5MM	14 X 9MM				
48MM	119811	7.6							

Δ Key furnished for these sizes ONLY

+ These sizes are STEEL

Refer to torque capacity ratings on page PT6-3. If service factor of 2.0 or greater is required consult DODGE

T-L FEATURES/BENEFITS PAGE PT6-2	T-L SPECIFICATION PAGE PT6-3	QD BUSHINGS PAGE PT6-16	GT BUSHINGS PAGE PT6-28
-------------------------------------	---------------------------------	----------------------------	----------------------------



SPECIFICATION

TAPER-LOCK Bushings - Stock Bore

TL Bush Size	Bore	P/N Keyway	WT.	Bushing Keyway	Shaft Keyway REF	Key Size REF
3030 (cont)	55MM	119812	6.9	16 X 4.3MM	16 X 6MM	16 X 10MM
	60MM	119813	6.4	18 X 4.4MM	18 X 7MM	18 X 11MM
	80MM +	119895	4	22 X 5.4MM	22 X 9MM	22 X 14MM
	1-3/16"	119702	16	1/4 x 1/8	1/4 x 1/8	1/4 x 1/4
	1-1/4"	119703	14.6			
	1-5/16"	119791	14.6	5/16 x 5/32	5/16 x 5/32	5/16 x 5/16
	1-3/8"	119704	14.3			
	1-7/16"	119734	14.2	3/8 x 3/16	3/8 x 3/16	3/8 x 3/8
	1-1/2"	119705	14			
	1-9/16"	119792	14			
	1-5/8"	119735	14			
	1-11/16"	119706	13.9			
	1-3/4"	119707	13.4			
1-13/16"	119793	13.3	1/2 x 1/4	1/2 x 1/4	1/2 x 1/2	
1-7/8"	119708	13.2				
1-15/16"	119709	13				
2"	119710	13				
2-1/8"	119711	12.6				
2-3/16"	119712	12.4				
2-1/4"	119713	12.3				
2-5/16"	119736	12.2	5/8 x 5/16	5/8 x 5/16	5/8 x 5/8	
2-3/8"	119714	12				
2-7/16"	119715	11.7				
2-1/2"	119716	11.5				
2-9/16"	119795	11.4				
2-5/8"	119717	11.1				
2-11/16"	119718	10.7	3/4 x 3/8	3/4 x 3/8	3/4 x 3/4	
2-13/16"	119796	10.3				
2-7/8"	119720	10.1				
2-15/16"	119721	10.5				
3"	119722	9.5				
3-1/16"	119797	9.4				
3-1/8"	119723	9.3				
3-3/16"	119724	8.6				
3-1/4"	119725	8.8				
3-5/16"	119737	8.6				7/8 x 1/8
3-3/8"	119726	8.5	7/8 x 3/16	7/8 x 7/16	7/8 x 5/8 Δ	
3-7/16"	119727	8.2				
3-1/2"	119728	8				
3-9/16"	119798	8				
3-5/8" #	119729	7.9				
3-11/16" #	119730	7.9	1 x 1/4	1 x 1/2	1 x 3/4 Δ	
3-3/4" #	119731	7.9				
3-13/16" #	119799	7.9				
3-7/8" #	119732	7.9				
3-15/16" #	119733	7.9				
3525	1-3/16"	117207	15.2	1/4 x 1/8	1/4 x 1/8	1/4 x 1/4
	1-1/4"	117208	14.9			
	1-3/8"	117209	14.8			
	1-7/16"	117210	14.6	3/8 x 3/16	3/8 x 3/16	3/8 x 3/8
	1-1/2"	117211	14.4			
	1-5/8"	117212	14.1			
	1-11/16"	117213	14			
	1-3/4"	117214	14			
	1-7/8"	117215	13.6	1/2 x 1/4	1/2 x 1/4	1/2 x 1/2
	1-15/16"	117216	13.4			
	2"	117217	13.1			
	2-1/8"	117218	12.6			
	2-3/16"	117219	12.4			
	2-1/4"	117220	12.2			

TL Bush Size	Bore	P/N Keyway	WT.	Bushing Keyway	Shaft Keyway REF	Key Size REF			
	2-5/16"	117237	12	5/8 x 5/16	5/8 x 5/16	5/8 x 5/8			
	2-3/8"	117221	11.7						
	2-7/16"	117222	11.7						
	2-1/2"	117223	11						
	2-5/8"	117224	10.9						
	2-11/16"	117225	10.7						
	2-3/4"	117226	10	3/4 x 3/8	3/4 x 3/8	3/4 x 3/4			
	2-7/8"	117227	9.8						
	2-15/16"	117228	9.7						
	3"	117229	9.2						
	3-1/8"	117230	9.2						
	3-3/16"	117231	8.8						
	3-1/4"	117232	8.7						
	3-5/16"	117236	8.6				7/8 x 1/8	7/8 x 7/16	7/8 x 9/16 Δ
	3-3/8"	117233	8.7						
3-7/16"	117234	8.3	7/8 x 3/16				7/8 x 7/16	7/8 x 5/8 Δ	
3-1/2"	117235	8							
3-5/8" #	117707	7.1	7/8 x 1/4	7/8 x 7/16	7/8 x 11/16 Δ				
3-11/16" #	117708	6.8	7/8 x 3/16	7/8 x 7/16	7/8 x 5/8 Δ				
3-3/4" #	117709	6.4							
3-7/8" #	117710	6	1 x 1/4	1 x 1/2	1 x 3/4 Δ				
3-15/16" #	117703	5.6							
32MM	119814	14.6	10 X 3.3MM	10 X 5MM	10 X 8MM				
38MM	119815	14							
48MM	119816	13.2	14 X 3.8MM	14 X 5.5MM	14 X 9MM				
50MM	117738	13							
55MM	119817	11.1	16 X 4.3MM	16 X 6MM	16 X 10MM				
60MM	119683	11.1	18 X 4.4MM	18 X 7MM	18 X 11MM				
65MM	117737	11							
75MM	117722	10	20 X 4.9MM	20 X 7.5MM	20 X 12MM				
80MM	117297	10	22 X 5.4MM	22 X 9MM	22 X 14MM				
85MM	393170	10							
90MM	426013	10	25 X 5.4MM	25 X 9MM	25 X 14MM				
95MM	426013	10							
3535 (cont)	1-7/16"	119738	24	3/8 x 3/16	3/8 x 3/16	3/8 x 3/8			
	1-1/2"	119739	22						
	1-9/16"	119770	21.9						
	1-5/8"	119740	21.8						
	1-11/16"	119771	21.5						
	1-3/4"	119772	21.2	1/2 x 1/4	1/2 x 1/4	1/2 x 1/2			
	1-13/16"	119773	21						
	1-7/8"	119774	20.9						
	1-15/16"	119775	20.7						
	2"	119741	20.6						
	2-1/16"	119776	20.6						
	2-1/8"	119742	20.7						
	2-3/16"	119743	20.4						
	2-1/4"	119744	20.1						
	2-5/16"	119777	20				5/8 x 5/16	5/8 x 5/16	5/8 x 5/8
	2-3/8"	119745	19.5						
	2-7/16"	119746	19.3						
	2-1/2"	119778	19.2						
	2-9/16"	119779	19.1						
	2-5/8"	119747	19						
2-11/16"	119780	18.4							
2-3/4"	119748	17.7							
2-13/16"	119781	17.5	3/4 x 3/8	3/4 x 3/8	3/4 x 3/4				
2-7/8"	119749	17.2							
2-15/16"	119750	17.2							
3"	119751	17							
3-1/16"	119782	16.8							
3-1/8"	119752	16.5							
3-3/16"	119783	15.9							
3-1/4"	119753	15.4							

Δ Key furnished for these sizes ONLY
 + These sizes are STEEL
 # Refer to torque capacity ratings on page PT6-3. If service factor of 2.0 or greater is required consult DODGE

T-L FEATURES/BENEFITS PAGE PT6-2	T-L SPECIFICATION PAGE PT6-3	QD BUSHINGS PAGE PT6-16	GT BUSHINGS PAGE PT6-28
-------------------------------------	---------------------------------	----------------------------	----------------------------



SPECIFICATION

TAPER-LOCK Bushings - Stock Bore

TL Bush Size	Bore	P/N Keyway	WT.	Bushing Keyway	Shaft Keyway REF	Key Size REF
4030 (cont)	3-5/16"	119784	14.9	7/8 x 7/16	7/8 x 7/16	7/8 x 7/8
	3-3/8"	119754	14.6			
	3-7/16"	119755	14.1			
	3-1/2"	119756	13.4			
	3-9/16"	119785	13.3			
	3-5/8"	119757	13.2			
	3-11/16"	119786	13			
	3-3/4"	119758	12.7	7/8 x 3/16	7/8 x 7/16	7/8 x 5/8 Δ
	3-13/16"	119787	12.7	1 x 1/2	1 x 1/2	1 x 1
	3-7/8"	119759	12.6	1 x 1/4	1 x 1/2	1 x 3/4 Δ
	3-15/16"	119760	12.6			
	4"	119761	12.6			
	4-1/8" #	119788	12.6			
	4-3/16" #	119762	12.6			
	4-1/4" #	119763	12.6			
	4-3/8" #	119764	12.6			
	4-7/16" #	119765	11.8			
4040	1-7/16"	117310	24	3/8 x 3/16	3/8 x 3/16	3/8 x 3/8
	1-1/2"	117311	22			
	1-5/8"	117312	22			
	1-11/16"	117313	21.9			
	1-3/4"	117314	21.9			
	1-7/8"	117315	21	1/2 x 1/4	1/2 x 1/4	1/2 x 1/2
	1-15/16"	117316	21.2			
	2"	117317	21.1			
	2-1/8"	117318	20.6			
	2-3/16"	117319	20.3			
	2-1/4"	117320	20.2	5/8 x 5/16	5/8 x 5/16	5/8 x 5/8
	2-3/8"	117321	19.6			
	2-7/16"	117322	19.3			
	2-1/2"	117323	18.8			
	2-5/8"	117324	18.7			
	2-11/16"	117325	18.3	3/4 x 3/8	3/4 x 3/8	3/4 x 3/4
	2-3/4"	117326	18.2			
	2-13/16"	117267	17.8			
	2-7/8"	117327	17.5			
	2-15/16"	117328	17.2			
	3"	117329	16.8	7/8 x 7/16	7/8 x 7/16	7/8 x 7/8
	3-1/8"	117330	16.2			
	3-3/16"	117331	15.8			
	3-1/4"	117332	15.5			
	3-3/8"	117333	14.8			
	3-7/16"	117334	14.4	7/8 x 3/16	7/8 x 7/16	7/8 x 5/8 Δ
	3-1/2"	117335	14			
	3-5/8"	117337	13.5			
	3-11/16"	117340	13.5	1 x 1/4	1 x 1/2	1 x 3/4 Δ
	3-3/4"	117336	13.5			
	3-7/8"	117341	12.9			
	3-15/16"	117338	12.5			
	4"	117352	12			
4-1/8" #	117714	11.2				
4-3/16" #	117715	10.7				
4-1/4" #	117716	10.3				
4-3/8" #	117717	9.5				
4-7/16" #	117704	8.9				
48MM	119818	21	14 X 3.8MM	14 X 5.5MM	14 X 9MM	
55MM	119819	20.4	16 X 4.3MM	16 X 6MM	16 X 10MM	
60MM	119820	19.5	18 X 4.4MM	18 X 7MM	18 X 11MM	
75MM	117723	10	20 X 4.9MM	20 X 7.5MM	20 X 12MM	
80MM	117724	10	22 X 5.4MM	22 X 9MM	22 X 14MM	
90MM	117726	10	25 X 5.4MM	25 X 9MM	25 X 14MM	
95MM	117725	10				
100MM	117729	10				28 X 6.4MM

Δ Key furnished for these sizes ONLY
+ These sizes are STEEL
Refer to torque capacity ratings on page PT6-3. If service factor of 2.0 or greater is required consult DODGE

TL Bush Size	Bore	P/N Keyway	WT.	Bushing Keyway	Shaft Keyway REF	Key Size REF			
4535	1-15/16"	114765	31	1/2 x 1/4	1/2 x 1/4	1/2 x 1/2			
	2"	114766	29.7						
	2-1/16"	114767	29.5						
	2-1/8"	114768	29.3						
	2-3/16"	114769	29						
	2-1/4"	114770	28.8						
	2-5/16"	114771	28.6				5/8 x 5/16	5/8 x 5/16	5/8 x 5/8
	2-3/8"	114772	27.4						
	2-7/16"	114773	28						
	2-1/2"	114774	26.7						
	2-9/16"	114775	26.4						
	2-5/8"	114776	25.9						
	2-11/16"	114777	25.4						
	2-3/4"	114778	25						
	2-13/16"	114779	24.9	3/4 x 3/8	3/4 x 3/8	3/4 x 3/4			
	2-7/8"	114780	24.8						
	2-15/16"	114781	24.2						
	3"	114782	24.2						
	3-1/16"	114783	24.2						
	3-1/8"	114784	24.1						
	3-3/16"	114785	23.8						
	3-1/4"	114786	23.1						
	3-5/16"	114787	22.7				7/8 x 7/16	7/8 x 7/16	7/8 x 7/8
	3-3/8"	114788	22.4						
	3-7/16"	114789	21.5						
	3-1/2"	114790	21.3						
	3-9/16"	114791	21.1						
	3-5/8"	114792	21						
	3-11/16"	114793	20.3						
	3-3/4"	114794	19.9						
	3-13/16"	114795	19.6	1 x 1/2	1 x 1/2	1 x 1			
	3-7/8"	114796	19.3						
	3-15/16"	114797	18.9						
4"	114798	18.7							
4-1/8"	114799	18.6							
4-3/16"	114800	18.5							
4-1/4"	114801	17.8							
4-3/8"	114802	16.8	1 x 1/4				1 x 1/2	1 x 3/4 Δ	
4-7/16"	114803	15.4							
4-1/2"	114804	15.3							
4-3/4" #	114805	15.2							
4-7/8" #	114806	15.1							
4-15/16" #	114807	14.9							
1-15/16"	117416	29.9		1/2 x 1/4	1/2 x 1/4	1/2 x 1/2			
2"	117417	29.8							
2-1/8"	117849	29.8							
2-3/16"	117419	29							
2-3/8"	117421	28.2	5/8 x 5/16				5/8 x 5/16	5/8 x 5/8	
2-7/16"	117422	27.9							
2-1/2"	117850	27.5							
2-5/8"	117424	27							
2-3/4"	117426	26.5							
2-7/8"	117427	25.7							3/4 x 3/8
2-15/16"	117428	25.3							
3"	117429	25.2							
3-1/8"	117430	24.3							
3-3/16"	117431	24.2							
3-1/4"	117432	23.9							
3-3/8"	117433	22.8	7/8 x 7/16	7/8 x 7/16	7/8 x 7/8				
3-7/16"	117434	22.6							
3-1/2"	117435	22.1							
3-5/8"	117413	21.2							
3-3/4"	117436	20.3							
3-7/8"	117437	19.5				1 x 1/2	1 x 1/2	1 x 1	
3-15/16"	117438	19							
4"	117439	18.6							
4-1/8"	117444	17.5							
4-3/16"	117443	17.1							
4-1/4"	117441	17							
4-3/8"	117442	16.9	1 x 1/4	1 x 1/2	1 x 3/4				

T-L FEATURES/BENEFITS PAGE PT6-2	T-L SPECIFICATION PAGE PT6-3	QD BUSHINGS PAGE PT6-16	GT BUSHINGS PAGE PT6-28
-------------------------------------	---------------------------------	----------------------------	----------------------------



SPECIFICATION

TAPER-LOCK Bushings - Stock Bore

TL Bush Size	Bore	P/N Keyway	WT.	Bushing Keyway	Shaft Keyway REF	Key Size REF
4545 (cont)	4-7/16"	117440	16.5	1 x 1/4	1 x 1/2	1 x 3/4 Δ
	4-1/2"	117447	15.9			
	4-3/4" #	117718	13.9	1-1/4 x 1/4	1-1/4 x 5/8	1-1/4 x 7/8 Δ
	4-7/8" #	117719	12.9			
	4-15/16" #	117705	12.5			
5040	2-7/16"	114865	39.5	5/8 x 5/16	5/8 x 5/16	5/8 x 5/8
	2-1/2"	114866	38.3			
	2-9/16"	114867	37.7			
	2-5/8"	114868	37.1			
	2-11/16"	114869	36.9			
	2-3/4"	114870	36.6	3/4 x 3/8	3/4 x 3/8	3/4 x 3/4
	2-13/16"	114871	36.5			
	2-7/8"	114872	36.4			
	2-15/16"	114873	36.2			
	3"	114874	35.6			
	3-1/16"	114875	35.2	7/8 x 7/16	7/8 x 7/16	7/8 x 7/8
	3-1/8"	114876	34.8			
	3-3/16"	114877	33.9			
	3-1/4"	114878	33.2			
	3-5/16"	114879	33			
	3-3/8"	114880	32.7	1 x 1/2	1 x 1/2	1 x 1
	3-7/16"	114881	32			
	3-1/2"	114882	31.7			
	3-9/16"	114883	31.4			
	3-5/8"	114884	31.1			
3-11/16"	114885	30.4				
3-3/4"	114886	29.7				
3-13/16"	114887	29.4				
3-7/8"	114888	29				
3-15/16"	114889	28.7				
4"	114890	27.8	1-1/4 x 1/4	1-1/4 x 5/8	1-1/4 x 7/8 Δ	
4-1/8"	114891	27.5				
4-3/16"	114892	27.2				
4-1/4"	114893	27				
4-3/8"	114894	26				
4-7/16"	114895	25.1	5/8 x 5/16	5/8 x 5/16	5/8 x 5/8	
4-1/2"	114896	23.6				
4-3/4"	114897	22.9				
4-7/8"	114898	22.2				
4-15/16"	114899	20.6				
5"	114900	20.5	3/4 x 3/8	3/4 x 3/8	3/4 x 3/4	
2-7/16"	117458	39				
2-11/16"	117450	37.4				
2-15/16"	117459	36				
3-3/8"	117452	33				
3-7/16"	117460	32.6	7/8 x 7/16	7/8 x 7/16	7/8 x 7/8	
3-5/8"	117453	31.2				
3-7/8"	117454	29.3				
3-15/16"	117461	28.6				
4"	117466	28.3				
4-1/4"	117465	26.2	1-1/4 x 1/4	1-1/4 x 5/8	1-1/4 x 7/8 Δ	
4-3/8"	117469	25				
4-7/16"	117462	24.4				
4-1/2"	117467	23.9				
4-5/8"	117734	23				
4-7/8"	117468	22.3	28 X 6.4MM	28 X 10MM	28 X 16MM	
4-15/16"	117463	21.4				
5"	117464	20.9				
110MM	117736	26.2				
4-7/16"	117474	63.6				1 x 1/2
4-15/16"	117473	58.2				
5-7/16"	117475	52.3				
5-15/16"	117476	57.2				
6"	117477	46.4				

TL Bush Size	Bore	P/N Keyway	WT.	Bushing Keyway	Shaft Keyway REF	Key Size REF
7060	4-15/16"	117490	92	1-1/4 x 5/8	1-1/4 x 5/8	1-1/4 x 1-1/4
	5-7/16"	117491	84.5			
	5-15/16"	117492	78.2	1-1/2 x 3/4	1-1/2 x 3/4	1-1/2 x 1-1/2
	6"	117493	76.6			
	6-7/16"	117494	68.1			
6-1/2"	117495	68.7	1-3/4 x 3/4	1-3/4 x 3/4	1-3/4 x 1-1/2	
6-15/16"	117496	62.1				
7" #	117497	60.6				
5-7/16"	117479	98.6				
5-15/16"	117480	105.7				
6-7/16"	117481	102.3	1-1/2 x 3/4	1-1/2 x 3/4	1-1/2 x 1-1/2	
6-1/2"	117482	101.8				
6-15/16"	117488	92				
7"	117483	91.1				
7-1/2"	117503	89.9				
8" #	117484	89.9	2 x 3/4	2 x 3/4	2 x 1-1/2	
7"	117486	245				
8"	117485	219				
8-1/4"	117411	210				
9"	117487	190				
10"	117510	157.5	2-1/2 x 7/8	2-1/2 x 7/8	2-1/2 x 1-3/4	
8"	117522	410				
8-1/2"	117523	395				
9"	117520	380				
9-1/2"	117524	365				
10"	117521	350	2-1/2 x 7/8	2-1/2 x 7/8	2-1/2 x 1-3/4	
10-1/2"	117525	335				
11"	117526	320				
11-1/2"	117527	305				
12" #	117508	290				

Δ Key furnished for these sizes ONLY
 + These sizes are STEEL
 # Refer to torque capacity ratings on page PT6-3. If service factor of 2.0 or greater is required consult DODGE

T-L FEATURES/BENEFITS PAGE PT6-2	T-L SPECIFICATION PAGE PT6-3	QD BUSHINGS PAGE PT6-16	GT BUSHINGS PAGE PT6-28
-------------------------------------	---------------------------------	----------------------------	----------------------------