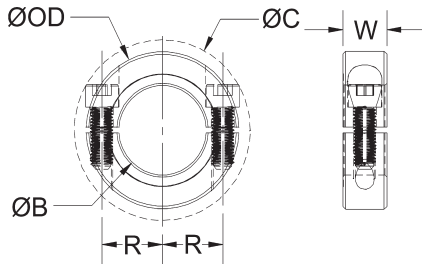
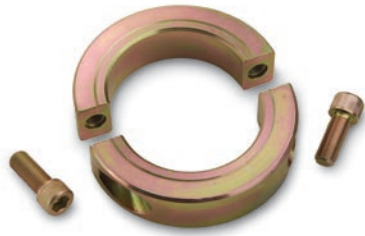


# TWO-PIECE CLAMP STYLE COLLAR

## INCH DIMENSION SERIES



- Does not mar the shaft.
- Single point faced.
- Available with keyways.
- Opposing screws available.
- Width tolerance: +.003"  
-.010"
- Bore tolerance: +.002"  
+.0005"

PART NUMBER						SPECIFICATIONS					
BLACK OXIDE STEEL	ZINC PLATED STEEL	ALUMINUM	STAINLESS STEEL	316 STAINLESS STEEL	PLASTIC	BORE B (in)	OUTER DIAM. OD (in)	SCREW LOCATION R (in)	CLEARANCE DIAM. C (in) MAX	WIDTH W (in)	FORGED CLAMP SCREW
SP-2-F	SP-2-FZ	SP-2-A	SP-2-SS	SP-2-ST	SP-2-P	0.1250	5/8	0.210	0.773	0.281	#4-40
SP-3-F	SP-3-FZ	SP-3-A	SP-3-SS	SP-3-ST	SP-3-P	0.1875	5/8	0.210	0.773	0.281	#4-40
SP-4-F	SP-4-FZ	SP-4-A	SP-4-SS	SP-4-ST	SP-4-P	0.2500	5/8	0.210	0.773	0.281	#4-40
SP-5-F	SP-5-FZ	SP-5-A	SP-5-SS	SP-5-ST	SP-5-P	0.3125	11/16	0.250	0.838	0.281	#4-40
SP-6-F	SP-6-FZ	SP-6-A	SP-6-SS	SP-6-ST	SP-6-P	0.3750	7/8	0.313	1.027	0.343	#6-32
SP-7-F	SP-7-FZ	SP-7-A	SP-7-SS	SP-7-ST	SP-7-P	0.4375	15/16	0.344	1.080	0.343	#6-32
SP-8-F	SP-8-FZ	SP-8-A	SP-8-SS	SP-8-ST	SP-8-P	0.5000	1-1/8	0.406	1.281	0.406	#8-32
SP-9-F	SP-9-FZ	SP-9-A	SP-9-SS	SP-9-ST	SP-9-P	0.5625	1-1/4	0.448	1.448	0.437	#10-32
SP-10-F	SP-10-FZ	SP-10-A	SP-10-SS	SP-10-ST	SP-10-P	0.6250	1-5/16	0.479	1.500	0.437	#10-32
SP-11-F	SP-11-FZ	SP-11-A	SP-11-SS	SP-11-ST	SP-11-P	0.6875	1-3/8	0.516	1.564	0.437	#10-32
SP-12-F	SP-12-FZ	SP-12-A	SP-12-SS	SP-12-ST	SP-12-P	0.7500	1-1/2	0.545	1.808	0.500	1/4-28
SP-13-F	SP-13-FZ	SP-13-A	SP-13-SS	SP-13-ST	SP-13-P	0.8125	1-5/8	0.610	1.916	0.500	1/4-28
SP-14-F	SP-14-FZ	SP-14-A	SP-14-SS	SP-14-ST	SP-14-P	0.8750	1-5/8	0.610	1.916	0.500	1/4-28
SP-15-F	SP-15-FZ	SP-15-A	SP-15-SS	SP-15-ST	SP-15-P	0.9375	1-3/4	0.678	2.032	0.500	1/4-28
SP-16-F	SP-16-FZ	SP-16-A	SP-16-SS	SP-16-ST	SP-16-P	1.0000	1-3/4	0.678	2.032	0.500	1/4-28
SP-17-F	SP-17-FZ	SP-17-A	SP-17-SS	SP-17-ST	SP-17-P	1.0625	1-7/8	0.740	2.140	0.500	1/4-28
SP-18-F	SP-18-FZ	SP-18-A	SP-18-SS	SP-18-ST	SP-18-P	1.1250	1-7/8	0.740	2.140	0.500	1/4-28
SP-19-F	SP-19-FZ	SP-19-A	SP-19-SS	SP-19-ST	SP-19-P	1.1875	2-1/16	0.828	2.295	0.500	1/4-28
SP-20-F	SP-20-FZ	SP-20-A	SP-20-SS	SP-20-ST	SP-20-P	1.2500	2-1/16	0.828	2.295	0.500	1/4-28
SP-21-F	SP-21-FZ	SP-21-A	SP-21-SS	SP-21-ST	SP-21-P	1.3125	2-1/8	0.859	2.351	0.563	1/4-28
SP-22-F	SP-22-FZ	SP-22-A	SP-22-SS	SP-22-ST	SP-22-P	1.3750	2-1/4	0.922	2.465	0.563	1/4-28
SP-23-F	SP-23-FZ	SP-23-A	SP-23-SS	SP-23-ST	SP-23-P	1.4375	2-1/4	0.922	2.465	0.563	1/4-28
SP-24-F	SP-24-FZ	SP-24-A	SP-24-SS	SP-24-ST	SP-24-P	1.5000	2-3/8	0.984	2.578	0.563	1/4-28
SP-25-F	SP-25-FZ	SP-25-A	SP-25-SS	SP-25-ST		1.5625	2-3/8	0.984	2.578	0.563	1/4-28
SP-26-F	SP-26-FZ	SP-26-A	SP-26-SS	SP-26-ST		1.6250	2-5/8	1.063	2.935	0.688	5/16-24
SP-27-F	SP-27-FZ	SP-27-A	SP-27-SS	SP-27-ST		1.6875	2-3/4	1.125	3.046	0.688	5/16-24
SP-28-F	SP-28-FZ	SP-28-A	SP-28-SS	SP-28-ST		1.7500	2-3/4	1.125	3.046	0.688	5/16-24
SP-29-F	SP-29-FZ	SP-29-A	SP-29-SS	SP-29-ST		1.8125	2-7/8	1.188	3.160	0.688	5/16-24
SP-30-F	SP-30-FZ	SP-30-A	SP-30-SS	SP-30-ST		1.8750	2-7/8	1.188	3.160	0.688	5/16-24
SP-31-F	SP-31-FZ	SP-31-A	SP-31-SS	SP-31-ST		1.9375	3	1.250	3.273	0.688	5/16-24
SP-32-F	SP-32-FZ	SP-32-A	SP-32-SS	SP-32-ST		2.0000	3	1.250	3.273	0.688	5/16-24
SP-33-F	SP-33-FZ	SP-33-A	SP-33-SS	SP-33-ST		2.0625	3-1/8	1.297	3.360	0.750	5/16-24
SP-34-F	SP-34-FZ	SP-34-A	SP-34-SS	SP-34-ST		2.1250	3-1/4	1.375	3.504	0.750	5/16-24
SP-35-F	SP-35-FZ	SP-35-A	SP-35-SS	SP-35-ST		2.1875	3-1/4	1.375	3.504	0.750	5/16-24
SP-36-F	SP-36-FZ	SP-36-A	SP-36-SS	SP-36-ST		2.2500	3-1/4	1.375	3.504	0.750	5/16-24
SP-37-F	SP-37-FZ	SP-37-A	SP-37-SS	SP-37-ST		2.3125	3-3/8	1.422	3.591	0.750	5/16-24
SP-38-F	SP-38-FZ	SP-38-A	SP-38-SS	SP-38-ST		2.3750	3-1/2	1.484	3.707	0.750	5/16-24
SP-39-F	SP-39-FZ	SP-39-A	SP-39-SS	SP-39-ST		2.4375	3-1/2	1.484	3.707	0.750	5/16-24
SP-40-F	SP-40-FZ	SP-40-A	SP-40-SS	SP-40-ST		2.5000	3-3/4	1.563	4.034	0.875	3/8-24
SP-41-F	SP-41-FZ	SP-41-A	SP-41-SS	SP-41-ST		2.5625	3-7/8	1.625	4.148	0.875	3/8-24
SP-42-F	SP-42-FZ	SP-42-A	SP-42-SS	SP-42-ST		2.6250	3-7/8	1.625	4.148	0.875	3/8-24
SP-43-F	SP-43-FZ	SP-43-A	SP-43-SS	SP-43-ST		2.6875	4	1.688	4.265	0.875	3/8-24
SP-44-F	SP-44-FZ	SP-44-A	SP-44-SS	SP-44-ST		2.7500	4	1.688	4.265	0.875	3/8-24
SP-45-F	SP-45-FZ	SP-45-A	SP-45-SS	SP-45-ST		2.8125	4-1/4	1.813	4.499	0.875	3/8-24
SP-46-F	SP-46-FZ	SP-46-A	SP-46-SS	SP-46-ST		2.8750	4-1/4	1.813	4.499	0.875	3/8-24
SP-47-F	SP-47-FZ	SP-47-A	SP-47-SS	SP-47-ST		2.9375	4-1/4	1.813	4.499	0.875	3/8-24
SP-48-F	SP-48-FZ	SP-48-A	SP-48-SS	SP-48-ST		3.0000	4-1/4	1.813	4.499	0.875	3/8-24
SP-49-F						3.0625	4-1/2	1.938	4.742	0.875	3/8-24
SP-50-F						3.1250	4-1/2	1.938	4.742	0.875	3/8-24
SP-51-F						3.1875	4-1/2	1.938	4.742	0.875	3/8-24
SP-52-F						3.2500	4-1/2	1.938	4.742	0.875	3/8-24
SP-53-F						3.3125	4-3/4	2.063	4.978	0.875	3/8-24
SP-54-F						3.3750	4-3/4	2.063	4.978	0.875	3/8-24
SP-55-F						3.4375	4-3/4	2.063	4.978	0.875	3/8-24
SP-56-F						3.5000	4-3/4	2.063	4.978	0.875	3/8-24
SP-57-F						3.5625	5	2.188	5.216	0.875	3/8-24
SP-58-F						3.6250	5	2.188	5.216	0.875	3/8-24
SP-59-F						3.6875	5	2.188	5.216	0.875	3/8-24
SP-60-F						3.7500	5	2.188	5.216	0.875	3/8-24
SP-61-F						3.8125	5-1/4	2.313	5.456	0.875	3/8-24
SP-62-F						3.8750	5-1/4	2.313	5.456	0.875	3/8-24
SP-63-F						3.9375	5-1/4	2.313	5.456	0.875	3/8-24
SP-64-F						4.0000	5-1/4	2.313	5.456	0.875	3/8-24

For engineering and warranty/disclaimer information, see pp. 3 and 19 or [www.ruland.com](http://www.ruland.com)